

Office Use Only

\_\_\_\_\_ Receipt Date

\_\_\_\_\_ Ship Date

**NAME** \_\_\_\_\_

**ADDRESS** \_\_\_\_\_

**CITY** \_\_\_\_\_ **STATE** \_\_\_\_\_ **ZIP** \_\_\_\_\_

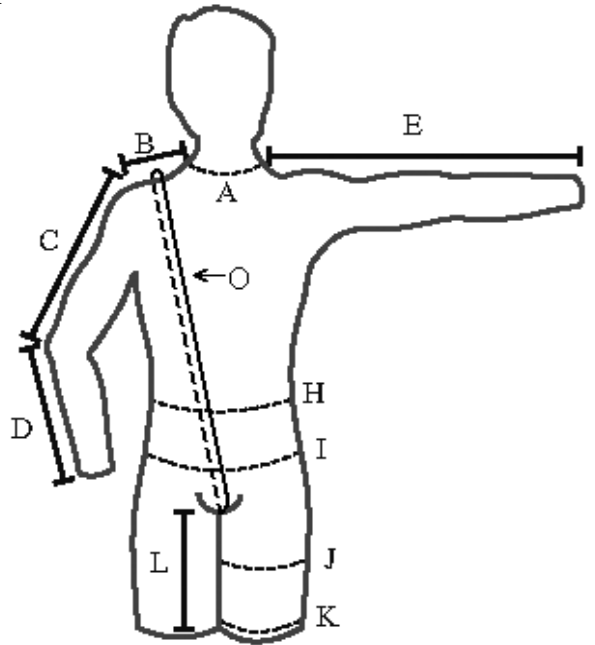
**PHONE** \_\_\_\_\_ **EMAIL** \_\_\_\_\_

**Shipping** \_\_\_\_\_

\_\_\_\_\_ **Dealer**

**Measurements-** Take measurements with the clothes on you would normally wear to skydive - include shoes.

- A. Around neck \_\_\_\_\_
- B. Side of neck to shoulder \_\_\_\_\_
- C. Shoulder to elbow \_\_\_\_\_
- D. Elbow to wrist \_\_\_\_\_
- E. Total Arm length- side of neck to wrist \_\_\_\_\_ straight-arm held horizontal to floor.
- F. Wrist \_\_\_\_\_ Bicep (flexed) \_\_\_\_\_ Forearm \_\_\_\_\_
- G. Chest \_\_\_\_\_ Women Only – Cup Size \_\_\_\_\_
- H. Waist \_\_\_\_\_
- I. Hips ( fullest part) \_\_\_\_\_
- J. Upper Thigh (fullest part) \_\_\_\_\_
- K. Around and just above knee \_\_\_\_\_
- L. Crotch to just above knee \_\_\_\_\_
- M. Above knee to floor \_\_\_\_\_
- N. Crotch to floor \_\_\_\_\_ Regular Pants Inseam \_\_\_\_\_
- O. Body length – shoulder at neck around crotch and back up around back to meet tape measure \_\_\_\_\_



Height \_\_\_\_\_ Weight \_\_\_\_\_ Sex \_\_\_\_\_

Circle Payment Method: Check Money Order MasterCard Visa

Expiration Date: \_\_\_\_/\_\_\_\_/\_\_\_\_ (month/year) Security Code \_\_\_\_\_ -

--	--	--	--	--	--	--	--	--	--	--	--	--	--	--	--	--	--	--	--	--

Card Account Number **4% Service Charge on Credit Card Orders**

\_\_\_\_\_  
Name of Issuing Bank Customer Signature

<b>Price</b>	<b>\$360.00</b>
<b>Options</b>	
<b>Subtotal</b>	
<b>Rush \$20 / Double \$40</b>	
Pa Residents Add 6% Sales Tax	
<b>US Shipping Ground rate</b>	<b>22.00</b>
Call for other options	
<b>Total</b>	
<b>Balance Due</b>	
<i>Thank you for your order!</i>	

## POLYCOTTON SUIT

FOR THE MATURE SKYDIVER WITH A LOWER  
CENTER OF GRAVITY

### POLYCOTTON TORSO / COLOR \_\_\_\_\_

- \_\_\_\_\_ Lining \$15.00
- \_\_\_\_\_ Coolmax Lining \$25.00
- \_\_\_\_\_ Velcro Zipper Tab \$10.00

### FOREARMS / COLOR \_\_\_\_\_

- \_\_\_\_\_ Polycotton - punch thru cuff
- \_\_\_\_\_ Swoop Cords - \$ 20.00
- \_\_\_\_\_ Velcro Cuffs \$20

### GRIPPERS / COLOR \_\_\_\_\_

- \_\_\_\_\_ **Two Color Grips** \$10.00
- \_\_\_\_\_ Front \_\_\_\_\_ Back \_\_\_\_\_

### Tape color \_\_\_\_\_

Tape color will be to match unless specified

- \_\_\_\_\_ Two stripes \$20.00 \_\_\_\_\_
- \_\_\_\_\_ Two stripes w/pin \$22.00 \_\_\_\_\_
- \_\_\_\_\_ Majik Stripes (Length of grips) \$25 Color \_\_\_\_\_
- \_\_\_\_\_ Inside Knee Grips \$15.00
- \_\_\_\_\_ Fat Grips \$20.00 (1-1/2 " Majik foam unless otherwise specified.)
- \_\_\_\_\_ Cordura Grips \$15.00

### POLYCOTTON LEG / COLOR \_\_\_\_\_

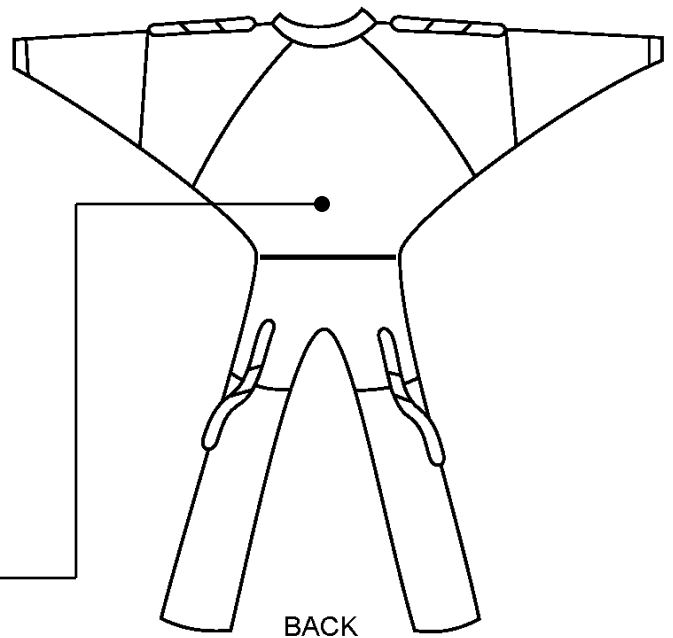
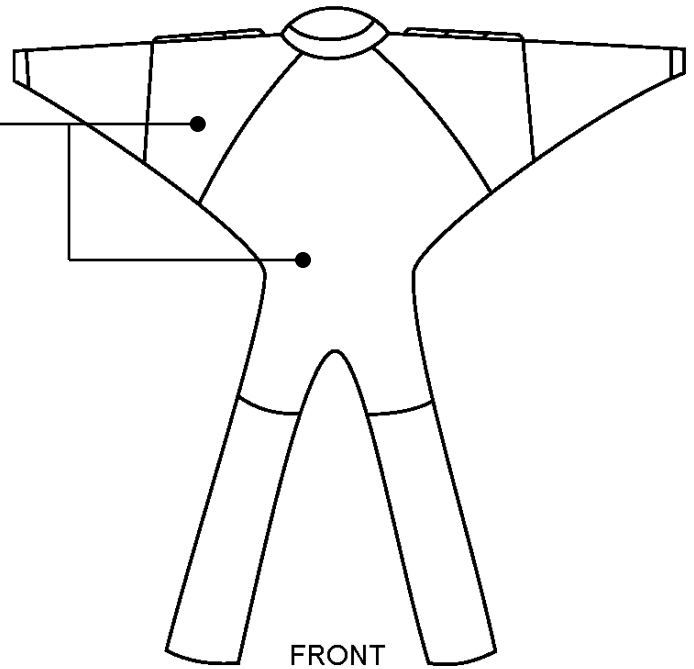
- \_\_\_\_\_ Straight leg
- \_\_\_\_\_ Booties \$55.00 Shoe size \_\_\_\_\_
- \_\_\_\_\_ Cordura Booties \$70.00 shoe size \_\_\_\_\_  
(includes cordura knees)
- \_\_\_\_\_ Majik bootie Modification (Pleated) \$90.00  
(Includes Cordura Knees)
- \_\_\_\_\_ Zippers on Booties (12 inch) \$25.00
- \_\_\_\_\_ High Zippers on Booties (above knee) \$30.00
- \_\_\_\_\_ Afterburners \$ 25.00 (slows fall rate)
- \_\_\_\_\_ Cordura Seat \$ 10.00
- \_\_\_\_\_ Cordura Knees \$ 10.00

### BACK COLOR \_\_\_\_\_

**Back of suit has an elastic waist**

**Suits have a standard inside left chest pocket**

- \_\_\_\_\_ Extra Pocket \$ 10.00 Location: \_\_\_\_\_



Special Instructions \_\_\_\_\_

\_\_\_\_\_

\_\_\_\_\_